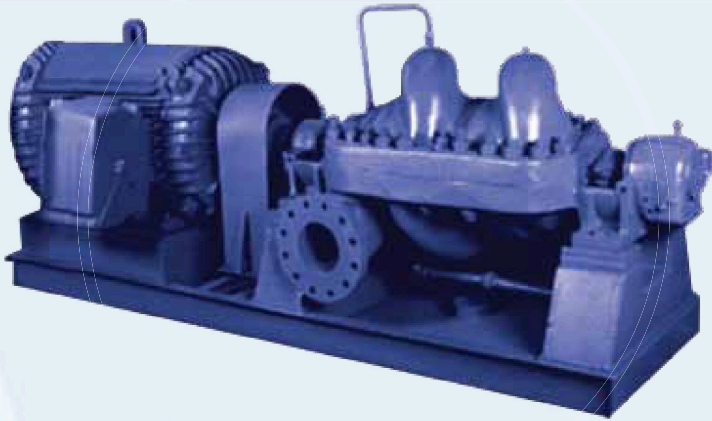


# Horizontal Split Case Pumps Multi Stage



## CHARACTERISTICS

- Two and four stage horizontal centrifugal pumps, double volute
- Horizontally split casing, lateral suction and discharge
- Enclosed impeller
- Counterclockwise rotation viewed from coupling end

## DESIGN FEATURES

- Oil lubricated bearings
- Flanged connections
- Stuffing box allows for packing or mechanical seal

## STANDARD CONSTRUCTION MATERIALS

- All cast iron
- Cast iron, bronze fitted
- Carbon steel, iron fitted
- Cast iron, 316 SS fitted

## OPERATING LIMITS

- Capacity to 454 m<sup>3</sup>/hr (2,000 U.S. gpm)
- Head to 670 m (2,200 ft)
- Pressure 50 bar (739 psi)
- Temperature max: 121°C (250°F)

## APPLICATIONS

- High pressure applications (boiler feed, petrochemical, chemical, industrial)
- Power plants

## RUHRPUMPEN NOMENCLATURE

- HSM